



Mirage Bottle Water Dispenser

- Dual dispense option lets users use water bottles or plumb directly to a water line
- Provides hot or cold water on demand through either source
- Stylish design to match contemporary kitchen and break room decors
- Temperature settings include Hot, Cook, & Cold
- Stainless steel reservoir & hot tank
- Bottom loading eliminates lifting heavy bottles
- One-piece hot water tank is easy to replace or service without breaking soldered refrigeration connections
- Durable dishwasher safe drip tray lifts out for easy removal
- Indicator lights for hot and cold tanks
- Certified to NSF/ANSI 372 for low lead content
- Energy Star certified
- UL listed
- Capacity: 0 - 5 gal.
- Height: 41"
- Width: 12-1/4"
- Depth: 13"
- Dispenser Height: 8-1/2"
- Manufacturer's Warranty: 3 Years Limited
- Hot Water Capacity: 1-1/2 Quart
- The Filtration system and water bottle are not included



Model No. **OQ914**
Mfg. No. M1R311D-3
Price/Each \$

Aquarius POU Countertop Water Dispenser

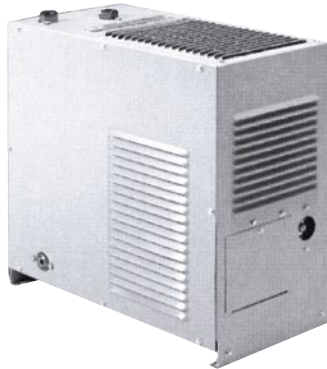
- Hot, cold and room-temperature water from a single dispense point
- Polymer casing won't rust or scratch countertop
- POU countertop can connect to a filtration system
- Two options for dispensing - choose from 3 pre-select cup sizes or any size
- 17" height to enable fit under kitchen cabinets
- Extra high 11" dispense height makes it easy to fill large bottles
- Commercial cooling capacity; compressor-driven refrigeration system
- Removable drip tray
- Certified to NSF/ANSI 372 for low lead content
- Energy Star certified
- UL Listed
- 3 year limited warranty
- Capacity: 0-0.3 gal.
- Height: 17"
- Width: 13-1/4"
- Depth: 14-1/2"
- Weight: 30 lbs.

Model No. **OQ845**
Mfg. No. POU1ACTH5K
Price/Each \$



Remote Water Chillers

- Used to serve multiple drinking fountains
- Can be installed in a wall or in remote areas



Model No.	Mfg. No.	GPH Capacity	Weight lbs.	Price /Each
OC715	502990	5	50	
OC716	502991	8	49	
OC717	502993	11.7	50	

Aqua-Pure™ In-Line Water Filter System

- Helps provide good quality water by reducing the effects of sediment, chlorine taste, odor and scale at flow rates up to 0.5 gpm
- The 1/4" push-in fittings included provide for easy installation
- Sanitary in design and requires no contact with the filter media during change-out
- Pressure: 125 PSI
- Water Temperature: 38°C/100°F
- Size: 1/4" NPT
- Max. Water Capacity: 1500 gal.
- Height: 8-1/4"
- Diameter: 2-1/5"
- Inlet Size: 1"
- Outlet Size: 1"

Model No. **OR242**
Mfg. No. 7100051441
Price/Each \$



Stay safe & work confidently with

