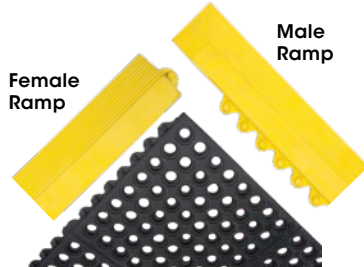




Anti-Fatigue Link Mats

- Designed to help prevent injuries and increase worker comfort
- Modular interlocking design on all four sides permits coverage of large floor spaces
- Recommended for wet and dry environments
- Lightweight and easy to clean
- Optional black and yellow border ramps to prevent tripping
- Material: Natural Rubber
- Style: Solid Mat
- Surface: Honeycomb Pattern
- Thickness: 1/2"

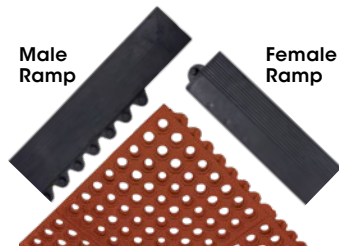


SDL865

- General purpose natural rubber mat
- 3" x 39" female border snaps onto the protruding knobs of the mat

SDL866

- Grease proof 50% nitrile rubber/ 50% natural rubber mat
- 3" x 39" male border snaps into the underside of the mat



MATS

Model No.	Dimensions		Colour	Price /Each
	W'	L'		
SDL865	3	3	Black	
SDL866	3	3	Brown	

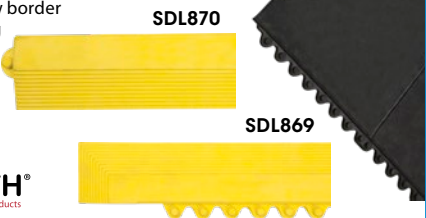
BORDER RAMPS

Model No.	Connection	Colour	Price /Each
SDL868	Female	Black	
SDL869	Male	Yellow	
SDL870	Female	Yellow	

Smooth Anti-Fatigue Mat

SDS622

- Designed to help prevent injuries and increase worker comfort
- Recommended for wet and dry environments
- Lightweight and easy to clean
- Modular interlocking design on all four sides permits coverage of large floor spaces
- Optional black and yellow border ramps to prevent tripping
- Thickness: 1/2"
- Colour: Black
- Material: Natural Rubber
- Width: 3'
- Length: 3'



MATS

Model No.	Dimensions		Colour	Price /Each
	W'	L'		
SDS622	3	3	Black	

BORDER RAMPS

Model No.	Connection	Colour	Price /Each
SDL868	Female	Black	
SDL869	Male	Yellow	
SDL870	Female	Yellow	

Anti-Fatigue Dome Mats

- Designed to help prevent injuries and increase worker comfort
- Raised dome design increases circulation in the users legs through subtle posture changes resulting in less stress
- Beveled edging to help prevent tripping
- Recommended for dry work environments
- All mats are 1/2" thick, natural rubber
- Colour: Black
- Style: Solid Mat
- Surface: Bi-Level Pattern



SDL857



SDL858



SDL864 - End

SDL863 - Center

SDL864 - End



SINGLE MATS

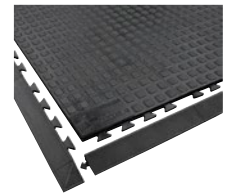
Model No.	Dimensions		Border Colour	Price /Each
	W'	L'		
SDL857	2	3	Black	
SDL858	2	3	Yellow	
SDL859	3	4	Black	
SDL862	3	4	Yellow	

MODULAR MATS

Model No.	Dimensions		Description	Border Colour	Price /Each
	W'	L'			
SDL860	3	4	Center	Black	
SDL861	3	4	End	Black	
SDL863	3	4	Center	Yellow	
SDL864	3	4	End	Yellow	

Rejuvenator® No. 502 Mats

- Customizable urethane mat, a perfect combination of extremely high performance and exceptional comfort
- Connects on all four sides to accommodate any custom sized area -even an entire floor
- No need for seaming or gluing; mats snap together and stay together
- Robust, abrasion resistant exterior skin totally encapsulates the resilient, crush-resistant urethane sponge interior making mat virtually indestructible
- An elevated square-grid surface creates an appealing symmetrical look for industrial, laboratory, pharmaceutical or commercial environments
- Ideal for dry and heavy use areas and exposure to a wide range of temperatures



Model No.	Description	Dim.			Price /Each
		W	x	L	
SAR340	Mat	3'	x	3'	
SAR341	Edge, Female	2"	x	39"	
SAR342	Edge, Male	2"	x	39"	
SED588	Center Mat	3'	x	5'	
SED589	End Mat w/ Female connectors	3'	x	5'	
SED590	End Mat w/ Male connectors	3'	x	5'	

REJUVENATOR® NO. 502 MATS FOR SINGLE WORKSTATION

- With molded-in ramps for easy access
- 5/8" thick
- Colour: Black

Model No.	Dim.			Price /Each
	W'	x	L'	
SED585	2	x	3	
SED587	3	x	5	