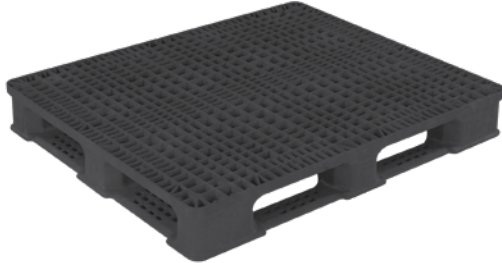




## RackoCell Plastic Pallets

- Designed to store products in wide variety of unsupported racking systems and optimize valuable floor space in warehouses and distribution systems
- Features flow-through deck for thorough sanitizing and fast drying capabilities
- Plastic pallet offers an economic, environmental and efficient alternative to wood pallets or skids
- Optional fork tine grommets (8) and outer post grommets (4) available upon request
- Pallet Entry: 4-Way
- Colour: Black



### ORBIS

Model No.	Dimensions					Capacity lbs.		Price /Each
	L"	x	W"	x	H"	Static	Dynamic	
CG004	48	x	40	x	6.3	30000	5000	

## Stack'R MD Pallets

- Open Deck With Stringer
- Designed specifically for stacking and racking applications
- Made of 100% HDPE
- The smooth, non-porous construction protects product and does not absorb moisture or odor
- Pallet Entry: 4-Way
- ISPM 15 exempt



### ORBIS

Model No.	Dimensions					Capacity lbs.		Wt. lbs.	Price /Each
	L"	x	W"	x	H"	Static	Dynamic		
MN726	48	x	40	x	5.9	30000	4000	44.4	

## Double Deck Stackable Pallets

- Designed for handling and shipping heavy products
- Manufactured in HDPE structural foam
- An economic, environmental and efficient alternative to wood pallets or skids
- Double deck design, ideal for stack loading, conveying systems, distribution and static storage
- 4-way entry for fork and hand trucks
- ISPM 15 exempt

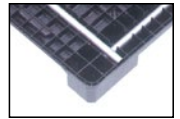


### ORBIS

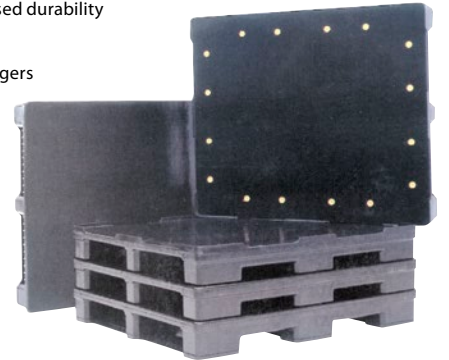
Model No.	Dimensions					Capacity lbs.		Wt. lbs.	Price /Each
	L"	x	W"	x	H"	Static	Dynamic		
MN168	48.7	x	45.7	x	7.5	30000	4000	62	

## Rackstar II™ Pallet

Rackstar II™ Pallet



- Highly impact resistant design
- Internal reinforcements meet aggressive application requirements
- 100% recyclable with fully removable reinforcement structure
- Solid wall design for increased durability
- 4-way forklift accessible
- Easy to sanitize
- Removable/repairable stringers or full frame bottom, with easy-to-replace fasteners, are available for added capacity in forklift and conveyor use
- Rackable
- ISPM 15 exempt



### ORBIS

Model No.	Dimensions			Capacity lbs.		Capacity lbs.			Wt. lbs.	Price /Each		
	L"	x	W"	x	H"	Description	Static	Dynamic			Decking	Centre Supports
CC163	48	x	40	x	6	Without lip	30000	6000	6000	6000	3000	56.6
(includes 16 deck grommets)												

## Extra-Long Stackable Pallets

- Pallet is fully reversible for double stacking of loads
- Manufactured in HDPE structural foam
- Designed for handling and shipping heavy product loads
- Ideal for stack loading, conveying systems, distribution and static storage
- 4-way entry for fork trucks
- ISPM 15 exempt



### ORBIS

Model No.	Dimensions					Capacity lbs.		Wt. lbs.	Price /Each
	L"	x	W"	x	H"	Static	Dynamic		
MN170	72	x	48	x	5.8	30000	4000	110	

## Stack'R LD Pallets

- Open deck with stringer
- Designed specifically for stacking applications
- Made of 100% recycled content
- Lower per-trip cost than alternative pallets
- Versatile handling with 4-way hand and fork truck entry
- Lighter weight for better ergonomics
- ISPM 15 exempt



### ORBIS

Model No.	Dimensions					Capacity lbs.		Wt. lbs.	Price /Each
	L"	x	W"	x	H"	Static	Dynamic		
MN714	48	x	40	x	5.9	30000	4000	44.4	