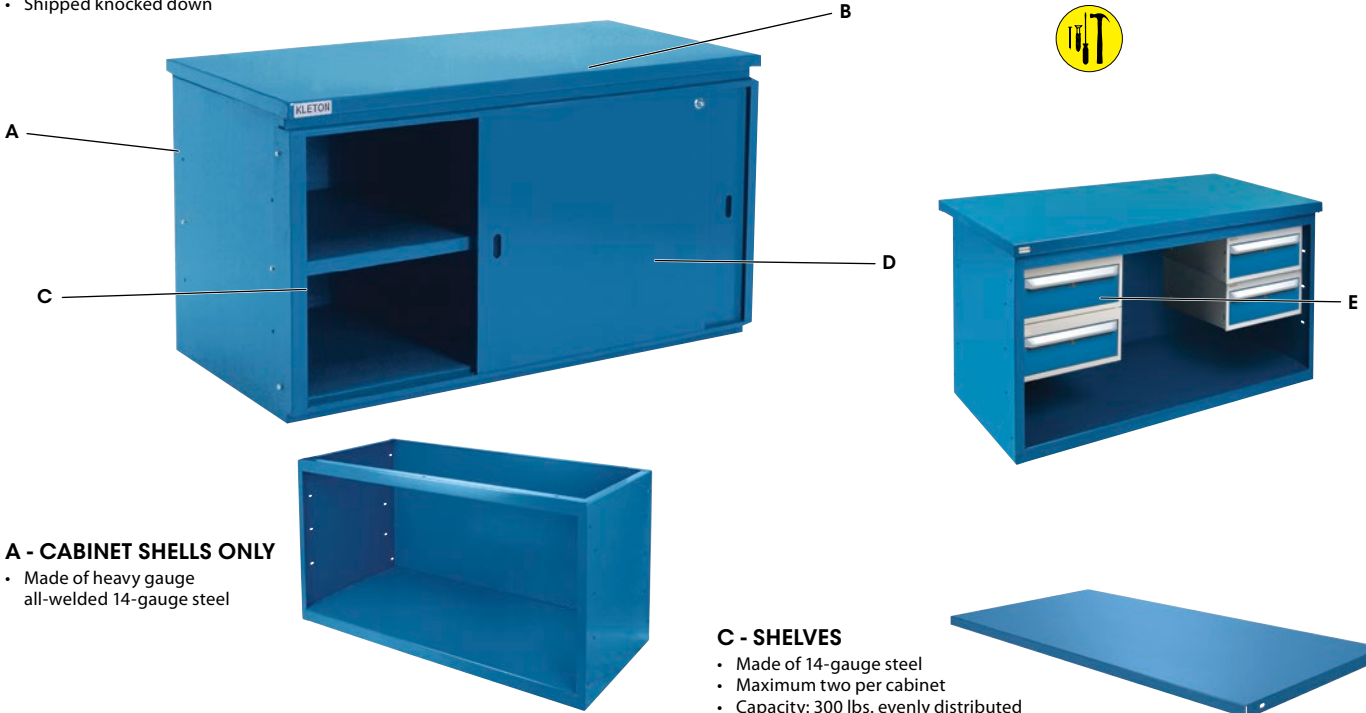




Build Your Own Cabinet Workbench

- Versatile cabinet workbench suited for any industrial application that requires work surface and secure tool and parts storage
- Steel-wood fill tops available in grey or blue
- Capacity: 3000 lbs. evenly distributed
- Durable Kleton blue enamel finish
- Shipped knocked down



A - CABINET SHELLS ONLY

- Made of heavy gauge all-welded 14-gauge steel

C - SHELVES

- Made of 14-gauge steel
- Maximum two per cabinet
- Capacity: 300 lbs. evenly distributed

Model No.	Dimensions				Wt. lbs.	Price /Each
	L"	x	W"	x		
FH165	28	x	59	x	32	105

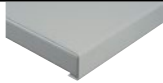
Model No.	Dimensions			Wt. lbs.	Price /Each
	L"	x	W"		
FH164	27 3/4	x	58 3/4	15	

B - TOPS

- Our complete list of tops can be found on page 1771

	Model No.		Price /Each
	Grey Tops	Blue Tops	

STEEL - WOOD FILL



Model No.	Size"
FD033	30 x 60
FD034	30 x 72
FD035	36 x 60
FD036	36 x 72

LAMINATED WOOD - BULLNOSE EDGE



Model No.	Size"
FI528	30 x 60
FI529	30 x 72
FI532	36 x 60
FI533	36 x 72

LAMINATED WOOD - SQUARE EDGE



Model No.	Size"
FI733	30 x 60
FI734	30 x 72
FL597	36 x 60
FI738	36 x 72

SHOP TOPS



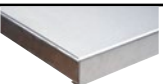
Model No.	Size"
FD004	30 x 60
FD005	30 x 72
FD006	36 x 60
FD007	36 x 72

PLASTIC LAMINATE



Model No.	Size"
FD011	30 x 60
FD012	30 x 72
FD013	36 x 60
FD014	36 x 72

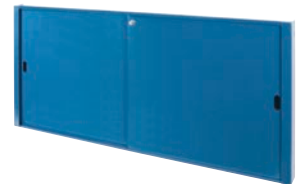
STAINLESS STEEL



Model No.	Size"
FI271	30 x 60
FI272	30 x 72
FI276	36 x 60
FI277	36 x 72

D - DOOR

- Made of 18-gauge steel on rollers
- Recessed handles
- Includes: Plunger lock and two keys



Model No.	Description	Wt. lbs.	Price /Each
FH163	Door Set, Lock Included	40	

E - DRAWERS

- All-welded heavy gauge steel
- 100% full extension with ball bearing slide mechanism
- All locks keyed alike by drawer model
- Includes: locks and two keys
- Aluminum extrusion handles with grey end caps
- Capacity: 100 lbs. per drawer evenly distributed



FH938



FH939

Model No.	Dimensions				Wt. lbs.	Price /Each
	L"	x	W"	x		
FH938	15 3/8	x	20	x	5 5/8	30
FH939	15 3/8	x	20	x	2 3/4	35