



Customize your own workbench... simply select any two cabinets listed and add a top.

## Workbench Pedestals

- All-welded heavy-gauge steel
- 100% full extension drawers with ball bearing slide mechanism
- Capacity: 100 lbs. per drawer evenly distributed
- Reversible doors, can be opened on either left or right side
- Optional bases add height in 4" increments (maximum two bases per pedestal)
- Aluminum extrusion handles with grey end caps
- Complete with locks and two keys
- All locks keyed alike for pedestal model
- Custom key options available
- 18" W x 21" D x 28" H, overall cabinet size
- 30" overall height with top
- Powder coat finish with grey shell and Kleton blue on doors and drawers



**FULL DOOR**

- 16 3/4" W x 21" D x 24" H
- Internal adjustable shelf included
- Weight: 48 lbs.

**Model No. FH666**  
Price/Each \$



**TWO DOORS**

- (2) 16 3/4" W x 21" D x 12" H
- Weight: 48 lbs.

**Model No. FH667**  
Price/Each \$



**TWO DRAWERS & ONE DOOR**

- (2) 15 3/8" W x 20" D x 5 5/8" H
- (1) 16 3/4" W x 21" D x 12" H
- Weight: 59 lbs.

**Model No. FH668**  
Price/Each \$



**TWO DRAWERS**

- (2) 15 3/8" W x 20" D x 11 5/8" H
- Weight: 66 lbs.

**Model No. FI166**  
Price/Each \$



**THREE DRAWERS**

- (2) 15 3/8" W x 20" D x 5 5/8" H
- (1) 15 3/8" W x 20" D x 11 5/8" H
- Weight: 78 lbs.

**Model No. FI167**  
Price/Each \$



**FOUR DRAWERS**

- (4) 15 3/8" W x 20" D x 5 5/8" H
- Weight: 68 lbs.

**Model No. FH669**  
Price/Each \$



**FOUR DRAWERS & ONE DOOR**

- (4) 15 3/8" W x 20" D x 2 5/8" H
- (1) 16 3/4" W x 21" D x 12" H
- Weight: 63 lbs.

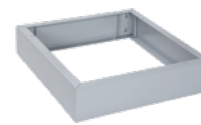
**Model No. FH670**  
Price/Each \$



**SIX DRAWERS**

- (4) 15 3/8" W x 20" D x 2 5/8" H
- (2) 15 3/8" W x 20" D x 5 5/8" H
- Weight: 94 lbs.

**Model No. FH671**  
Price/Each \$



**BASE**

- (1) 4" high - 34" high with top
- Weight: 5 lbs.

**Model No. FH672**  
Price/Each \$



## Leg & Pedestal Combinations

- All-welded 14-gauge steel legs
- Knockout for standard two-outlet electrical plug
- Overall height of 34" with top
- Powder coat Kleton grey finish

Model No.	Description	Dimensions			Wt. lbs.	Price /Each
		D"	x	H"		
ML264	Single leg for use w/ 24" D top	22	x	32	14	
ML265	Single leg for use w/ 30" D or 36" D top	28	x	32	15	
FH672	Pedestal Base (Max 1)	-	x	4	5	
FF920	Bench Leg Gussets (Pkg. of 2)	-	x	-	3	

Pedestal base and bench leg gussets are required components when building all leg/pedestal combinations



We try to make it easy...  
Take a look at our pre-designed layout options on pages 471-475

### HOW TO ORDER

1. Choose the pedestal desired
2. Determine the depth of the workbench
3. Add the appropriate leg configuration

See our selection of workbench tops on page 470.