



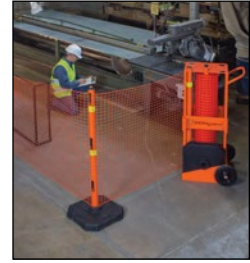
## Portable Safety Zone

- Quickly creates a safe and complete visual barrier zone in virtually unlimited indoor applications
- Simple set-up and take-down
- Slim design takes little space and allows for easy storage
- Lightweight and balanced for easy transportation by one operator
- Robust construction in "safety orange" powder coated steel
- Comes complete with 100' safety orange fencing, 4 posts, 4 rubber base pads and 4 magnetic fence clips
- Easily fits through 30" doorways
- Suitable for both indoor and outdoor applications on smooth surfaces



Model No.	Mfg. No.	Description	Price /Each
SDP585	70-6030	Portable Safety Zone	
SDP586	70-6036	Optional LED Lights	

SDP585



SDP586

## Rapid Roll Barriers

- Extended Length: 50'
- Material: Plastic

### WHEELED BARRIERS

- Reflective safety tape is fitted on both sides of the cartridge
- Orange cartridge and raised profile fencing
- Includes 4 x orange posts with end lockout and 4 rubber bases

### 3-LEGGED BARRIERS

- Reflective safety tape is fitted on both sides of the cartridge
- Orange cartridge and raised profile fencing
- Includes 4 x orange posts with end lockout and 4 rubber bases
- Steel cartridge base



## Traffic Barriers

- Rugged plastic traffic barricades are perfect for a variety of applications
- Can be filled with sand or water, and quickly emptied for easy transportation
- Colour: Orange



SFU851



## RAPID ROLL™

Model No.	Mfg. No.	Description	Height"	Wt. lbs.	Price /Each
SFU863	70-7050	Wheeled	64	215	
SFU864	70-7000	3-Legged	57.5	183	

## DPI™

Model No.	Mfg. No.	Height"	Length"	Price /Each
SFU851	TB-5-10	24	62 1/4	
SFU004	TB-6-10	33 3/4	69 3/4	

## Barricade Lights

- Incandescent, 6-V barricade light
- Has a lamp life of 2000 hours and flashes 55 to 75 flashes per minute
- Can be set for flash or steady burn
- High clarity polycarbonate lens provides extreme durability
- Attaches to most barricades and channelizers with a bolt
- Meets all MUTCD and ITE specifications
- Requires two 6 V batteries (not included)
- Colour: Amber
- Light Dia.": 7
- Overall Dimensions: 7 1/2 L" x 5 1/2 W" x 11 1/2 H"
- Includes photocell

Model No. SEM242  
Mfg. No. 03-10-3WAY6V  
Price/Each \$

SEM242



### D-CELL BARRICADE LIGHT

- Three modes: flash, steady, off
- Pushing on the mode switch changes the light from a flashing type "A" to a steady burn type "C" and back again
- Requires four easy to install D batteries (not included)

Model No. SEI701  
Mfg. No. 03-10-3WAYDC  
Price/Each \$

### REPLACEMENT BATTERIES, 12/PKG.

Model No. XB875  
Mfg. No. EN95  
Price/Each \$

SEI701

