



### UniFreight Truck Seals

- Disposable polypropylene truck seal readily displays the slightest evidence of tampering
- Unique self-locking seal outperforms the conventional metal seals
- Seals are marked with "SEALED" and a 7-digit consecutive number
- Easy to close, no tools needed
- 1000/box
- Type: Truck Seal
- Length: 7.75"
- Width: 1/2"



**Note:** Seals can be custom marked subject to extra charge and minimum order quantity

Model No.	Colour	Price /Each
PF646	Red	
PF647	Blue	

### UniPull Heavy-Duty Seals

- Heavy-duty, polypropylene, one piece construction
- Tamper-resistant acetel locking mechanism
- Weather resistant, withstands extremes of cold and heat
- Matted in strips of 10 for ease-of-use
- 1000/box
- Seals marked with the word "SEALED" and a 7-digit consecutive number
- Width: 1"



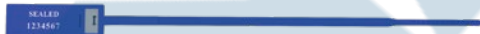
**Note:** Seals can be custom marked subject to extra charge and minimum order quantity



Model No.	Colour	Length"	Price /Each
PF633	Blue	12	
PF634	Red	12	
PF635	Blue	15	
PF636	Red	15	
PF637	Blue	18	
PF638	Red	18	

### UniStrap Seals

- Ideal for a wide range of applications
- 10 seals per mat
- Smooth tail insertion for easy pull-up
- Integral metal clip provides a high level of security
- Seals marked with the word "SEALED" and a 7-digit consecutive number
- 1000/box
- Type: Pull-Up Seal
- Length: 13"
- Width: 1"



**Note:** Seals can be custom marked subject to extra charge and minimum order quantity

Model No.	Colour	Price /Each
PF641	Blue	
PF642	Red	

### UniFlex D Seals

- One piece, easy-break, all-plastic construction
- Straight locking arrow fits most latch mechanisms
- Designed for cost-effective tamper-evidence and quick access
- Seals are marked with "SEALED" and a 7-digit consecutive number
- Designed for single hand application
- 1000/box
- Type: Plastic Seal
- Length: 0.9375"
- Width: 1"



**Note:** Seals can be custom marked subject to extra charge and minimum order quantity

Model No.	Colour	Price /Each
PF643	Red	
PF644	Blue	

### Pull-Tite II Seals

- For tagging and sealing, one piece
- Polypropylene seal is installed and removed without tools
- Feature a double wall locking chamber which resembles a double dome design
- The inner dome performs the actual locking while the outer dome protects against tampering attempts
- Seals have the wording "Seal" and 7 consecutive numbers
- 1000/box



**Model No. PB788**  
**Price/Each \$**



### Guard Lock® Seals

- Self-locking tamper-resistant seal requires no tools to apply
- Simply insert the band into the locking sheath as far as it will go and its locked
- One time use, metal cutter required to remove
- Tin flat metal seal features a hook-lock mechanism that locks securely with one simple motion
- Safety rolled edge for easy handling
- Seals have the wording "Secured" and 7 consecutive numbers embossed
- 1000/box



**Note:** Customization up to 17 characters plus 7 consecutive numbers at no extra charge is available

**Model No. PE997**  
**Price/Each \$**



### High Security Locktainer™ Bolt Seals

- High security steel bolt seal with ABS plastic coated steel pin and locking chamber
- Specifically designed for ISO containers and high value shipments
- ISO 17712 compliant
- Plastic cover on pin and locking chamber clearly indicates tampering
- Carbon steel bolt is 3.5" (89 mm) long and 3/8" (9 mm) in diameter
- Seals marked with the word "SEALED" and a 7-digit consecutive number
- Average pull-apart force is 3775 lbs.
- 200/box
- Type: Bolt Seal
- Length: 3.5"
- Width: 1"



**Note:** Seals can be custom marked subject to extra charge and minimum order quantity



Model No.	Colour	Price /Each
PF622	Blue	
PF623	Red	

### FlexiGrip™ High Security Cable Seals

- High security cable seal designed for use in a variety of applications
- ISO 17712 compliant
- Corrosion resistant aluminum body
- Cable cutter required
- Seals marked with the word "SEALED" and a 6-digit consecutive number
- 200/box
- Type: Cable Seal
- Diameter: 1/8" (3.25 mm)
- Length: 12" (300 mm)
- Width: 1"
- Colour: Blue

**Note:** Seals can be custom marked subject to extra charge and minimum order quantity

**Model No. PF645**  
**Mfg. No. F325M-2-12**  
**Price/Each \$**

