

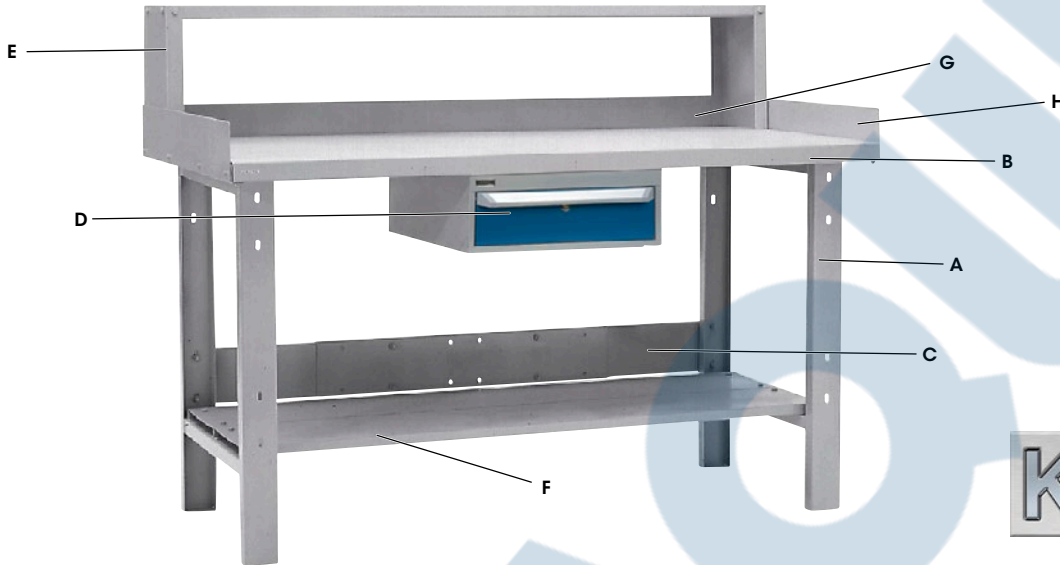


Create a Workbench Designed for Your Application

- Select from the components below to build the workbench to fit your needs
- All components **required** to make up your workbench are on this page
- **Optional** features for enhanced functionality are on the following page
- All steel components are constructed of 14-gauge steel unless otherwise specified
- All mounting hardware included
- Capacities range from 1000 lbs. to 2500 lbs. evenly distributed
- All steel components are powder coated Kleton grey
- Shipped knocked down

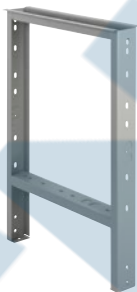
THINGS TO CONSIDER WHEN ORDERING A WORKBENCH

1. Determine the size (length, width, height) of the workbench required
2. Select one of each of the required components listed on this page, respecting the determined size of the workbench



A - LEGS

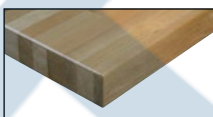
- Legs static or mobile
- Comes with knockout for standard two-outlet electrical plug
- Provides an overall height of 34" w/top



B - TOPS

A variety of tops are available: 14-gauge steel wood filled, laminated wood, shop top and plastic laminate in a variety of sizes.

Our complete list of tops can be found on page 1771



Wood Top - Square Edge



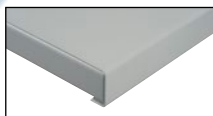
Wood Top - Bullnose



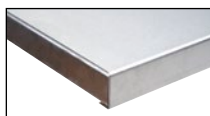
Shop Top



Plastic Laminate



Steel Wood-Filled



Stainless Steel Wood-Filled

C - UNIVERSAL STRINGERS

- Adds stability to the workbench
- Prevents legs from shifting
- Weight: 11lbs.

HEAVY-DUTY

Model No. FF979 For 48", 60" or 72" bench Price/Each \$
 Model No. FH925 For 84" bench Price/Each \$
 Model No. FH926 For 96" bench Price/Each \$

INDUSTRIAL DUTY

Model No. MO936 For 48", 60" or 72" bench Price/Each \$



Model No.	Description	Dimensions			Wt. lbs.	Price /Each
		D"	x	H"		
HEAVY-DUTY						
ML264	Single leg for use w/ 24"D top	22	x	32	14	
ML265	Single leg for use w/ 30"D or 36"D top	28	x	32	15	
ML266*	Pair of legs to use w/24"D tops, includes stringer FF979	22	x	32	38	
ML268*	Pair of legs to use w/30"D or 36"D tops, includes stringer FF979	28	x	32	40	
ML267*	Mobile kit for use w/24"D top (pair), includes stringer FF979	22	x	32	45	
ML269*	Mobile kit for use w/30"D or 36"D top (pair), includes stringer FF979	28	x	32	40	
FG732	Leg extensions to make height adjustable from 34"-39" in 1" increments (set of 4)				8	
INDUSTRIAL DUTY						
M0931	Single leg for use w/24"D top	24	x	34	8	
M0932	Single leg for use w/30"D or 36"D top	30	x	34	8	

* For 84" L and 96" L tops, FH925 or FH926 stringers are required