



### Standard Letter Size Drill Gauges - Hardened

A-Z - (0.234-0.4130" DIAMETER)

### "Time Saver" Tap & Drill Gauges - Hardened

NO. 185 - NOS. 1-60 (0.228-0.0400")



HT898



HT850



A-Z RANGE

Model No.	EDP No.	Description	Price/Each
HT898	50718	A to Z Letter Size Drill Gauge	

NOS. 1-60 (0.228-0.040") RANGE

Model No.	Mfg. No.	Range Tap Size	Range Tap Drill	Range Body Drill	Price/Each
HT850	50675	2-56 to 1/4-28	50 to 3	44 to 1/4	

### Precision Steel Pin Gauges

- Colour coded, fully adjustable, Go/No-Go gauge handle
- Sets are supplied in rugged, high impact protective cases with each space marked for the appropriate gauge
- Full inspection report with every set, on each individual gauge pin
- All Starrett® pin gauges are manufactured to a 0.0002" tolerance
- Plus and minus tolerance sets and individual pins available
- Offered in 0.001" increments
- Each pin is centreless lapped micro finish and is clearly etched with the stated size
- All gauges are 2" long and hardened to RC 60/64
- All sharp corners are broken

#### USE STARRETT® PIN GAUGES FOR:

- Quick, precision Go/No-Go gauging
- Setting micrometers
- Measuring hole depths and hole sizes
- Checking distances between holes
- Checking locations



HW455



Model No.	EDP No.	Description	Sizes"	Price/Each
HW455	67480	Set of gauges and double end handle	0,011-0,060+	
HW456	67481	Set of gauges and double end handle	0,011-0,060-	
HW457	67482	Set of gauges and double end handle	0,061-0,250+	
HW458	67483	Set of gauges and double end handle	0,061-0,250-	
HW459	67484	Set of gauges and double end handle	0,251-0,500+	
HW460	67485	Set of gauges and double end handle	0,251-0,500-	
HW461	67486	Set of gauges and double end handle	0,501-0,625+	
HW462	67487	Set of gauges and double end handle	0,501-0,625-	
HW463	67488	Set of gauges and double end handle	0,626-0,750+	
HW464	67489	Set of gauges and double end handle	0,626-0,750-	
HW465	67490	Set of gauges and double end handle	0,751-0,832+	
HW466	67491	Set of gauges and double end handle	0,751-0,832-	
HW467	67492	Set of gauges and double end handle	0,833-0,916+	
HW468	67493	Set of gauges and double end handle	0,833-0,916-	
HW469	67494	Set of gauges and double end handle	0,917-1,00+	
HW470	67495	Set of gauges and double end handle	0,917-1,00-	

### Drill & Steel Wire Gauges - Hardened

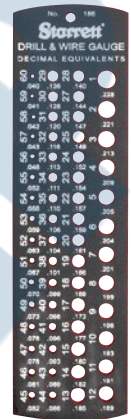
NOS. 1-60 (0.228-0.0400")

### Jobbers' Drill Gauges - Hardened

1/16 - 1/2"



HT852



HT851



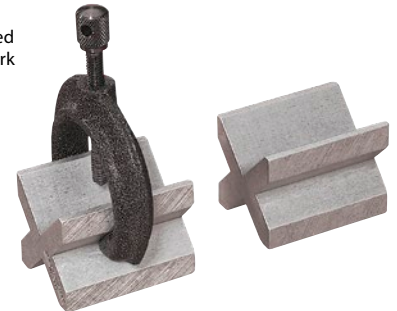
Model No.	EDP No.	Description	Price/Each
<b>NOS. 1-60 (0.228-0.0400") RANGE</b>			
HT851	50676	Drill and Steel Wire Gauge	

1/16-1/2" RANGE

HT852	50677	Jobbers' Drill Gauge	
-------	-------	----------------------	--

### V-Blocks & Clamps

The blocks are made of cast iron, each 1 1/2" (38 mm) square and 2" (50 mm) long. The clamp is ribbed for extra strength and will hold work up to 1 1/8" (28 mm) in diameter.



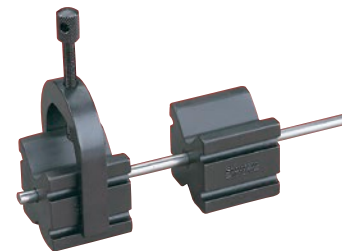
HU386 - V-Blocks, Clamp

Capacity in.	mm	Description	Model No.	EDP No.	Price/Each
1 1/8	28	2 V-Blocks (One Pair)	HU384	51287	
		Complete Set with 2 V-Blocks (One Pair) and Clamp	HU386	51289	

### V-Blocks & Clamps

The V-Blocks of this set are of case hardened steel for wear resistance and may be used singly or in pairs.

This set includes a steel rod which passes through each block, firmly held by friction positioning. This keeps the blocks in alignment and adds convenience for holding work with shoulders because the shoulders can rest between the blocks.



HU394 - V-Blocks, Clamp

Capacity in.	mm	Description	Model No.	EDP No.	Price/Each
1 1/4	32	2 V-Blocks (One Pair)	HU392	51293	
		Complete Set with 2 V-Blocks (One Pair) and Clamp	HU394	51295	
		Clamp Only	HU393	51294	