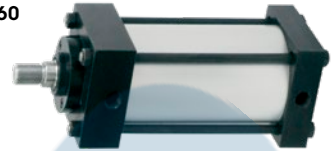




## NFPA Repairable Pneumatic Cylinders

- Fully interchangeable to NFPA footprints
- Double acting repairable pneumatic cylinders provide linear action to automate movement with compressed air
- Catalogued enclosed from 1 1/2" bore to 6" bore and up to 30" stroke
- Cylinders feature aluminum barrels and end caps, stainless steel piston rod and steel tie rods for a sturdy general purpose industrial design
- Good for pressures up to 250 PSI and temperatures between -10°F to 165°F
- Use with Numatics® 5/2 way 4-way spool valve for solenoid valve actuation

TLY660



numatics

### DOUBLE ACTING NFPA PNEUMATIC CYLINDERS 1 1/2" - 6" BORE & 1" TO 30" STROKE

Stroke"	Bore Size																	
	1 1/2"			2"			2 1/2"			3 1/4"			4"			6"		
Model No.	Mfg. No.	Price /Each	Model No.	Mfg. No.	Price /Each	Model No.	Mfg. No.	Price /Each	Model No.	Mfg. No.	Price /Each	Model No.	Mfg. No.	Price /Each	Model No.	Mfg. No.	Price /Each	
1	TLY660	XOAK-01A1D-AAA0	TLY675	XOAL-01A1D-AAA0	TLY690	XOAM-01A1D-AAA0	TLY705	XOAP-01A1E-AAA0	TLY720	XOAR-01A1E-AAA0	TLY735	XOAU-01A1F-AAA0						
2	TLY661	XOAK-02A1D-AAA0	TLY676	XOAL-02A1D-AAA0	TLY691	XOAM-02A1D-AAA0	TLY706	XOAP-02A1E-AAA0	TLY721	XOAR-02A1E-AAA0	TLY736	XOAU-02A1F-AAA0						
3	TLY662	XOAK-03A1D-AAA0	TLY677	XOAL-03A1D-AAA0	TLY692	XOAM-03A1D-AAA0	TLY707	XOAP-03A1E-AAA0	TLY722	XOAR-03A1E-AAA0	TLY737	XOAU-03A1F-AAA0						
4	TLY663	XOAK-04A1D-AAA0	TLY678	XOAL-04A1D-AAA0	TLY693	XOAM-04A1D-AAA0	TLY708	XOAP-04A1E-AAA0	TLY723	XOAR-04A1E-AAA0	TLY738	XOAU-04A1F-AAA0						
5	TLY664	XOAK-05A1D-AAA0	TLY679	XOAL-05A1D-AAA0	TLY694	XOAM-05A1D-AAA0	TLY709	XOAP-05A1E-AAA0	TLY724	XOAR-05A1E-AAA0	TLY739	XOAU-05A1F-AAA0						
6	TLY665	XOAK-06A1D-AAA0	TLY680	XOAL-06A1D-AAA0	TLY695	XOAM-06A1D-AAA0	TLY710	XOAP-06A1E-AAA0	TLY725	XOAR-06A1E-AAA0	TLY740	XOAU-06A1F-AAA0						
7	TLY666	XOAK-07A1D-AAA0	TLY681	XOAL-07A1D-AAA0	TLY696	XOAM-07A1D-AAA0	TLY711	XOAP-07A1E-AAA0	TLY726	XOAR-07A1E-AAA0	TLY741	XOAU-07A1F-AAA0						
8	TLY667	XOAK-08A1D-AAA0	TLY682	XOAL-08A1D-AAA0	TLY697	XOAM-08A1D-AAA0	TLY712	XOAP-08A1E-AAA0	TLY727	XOAR-08A1E-AAA0	TLY742	XOAU-08A1F-AAA0						
10	TLY668	XOAK-10A1D-AAA0	TLY683	XOAL-10A1D-AAA0	TLY698	XOAM-10A1D-AAA0	TLY713	XOAP-10A1E-AAA0	TLY728	XOAR-10A1E-AAA0	TLY743	XOAU-10A1F-AAA0						
12	TLY669	XOAK-12A1D-AAA0	TLY684	XOAL-12A1D-AAA0	TLY699	XOAM-12A1D-AAA0	TLY714	XOAP-12A1E-AAA0	TLY729	XOAR-12A1E-AAA0	TLY744	XOAU-12A1F-AAA0						
14	TLY670	XOAK-14A1D-AAA0	TLY685	XOAL-14A1D-AAA0	TLY700	XOAM-14A1D-AAA0	TLY715	XOAP-14A1E-AAA0	TLY730	XOAR-14A1E-AAA0	TLY745	XOAU-14A1F-AAA0						
16	TLY671	XOAK-16A1D-AAA0	TLY686	XOAL-16A1D-AAA0	TLY701	XOAM-16A1D-AAA0	TLY716	XOAP-16A1E-AAA0	TLY731	XOAR-16A1E-AAA0	TLY746	XOAU-16A1F-AAA0						
18	TLY672	XOAK-18A1D-AAA0	TLY687	XOAL-18A1D-AAA0	TLY702	XOAM-18A1D-AAA0	TLY717	XOAP-18A1E-AAA0	TLY732	XOAR-18A1E-AAA0	TLY747	XOAU-18A1F-AAA0						
20	TLY673	XOAK-20A1D-AAA0	TLY688	XOAL-20A1D-AAA0	TLY703	XOAM-20A1D-AAA0	TLY718	XOAP-20A1E-AAA0	TLY733	XOAR-20A1E-AAA0	TLY748	XOAU-20A1F-AAA0						
30	TLY674	XOAK-30A1D-AAA0	TLY689	XOAL-30A1D-AAA0	TLY704	XOAM-30A1D-AAA0	TLY719	XOAP-30A1E-AAA0	TLY734	XOAR-30A1E-AAA0	TLY749	XOAU-30A1F-AAA0						

Rod Diameters: 1 1/2", 2" & 2 1/2" Bore = 0.625; 3 1/4", 4", 5" Bore = 1.000; 6" Bore = 1.375";

Port Sizes: 1 1/2", 2" & 2 1/2" Bore = 3/8" FNPT; 3/4", 4", 5"; Bore = 1/2" FNPT, 6" Bore = 3/4" FNPT

Repair Kits	TLY567	A98-KON-AA	TLY568	A98-LON-AA	TLY569	A98-MON-AA	TLY570	A98-PON-AA	TLY571	A98-RON-AA	TLY572	A98-UON-AA
Rod Clevis	TLY561	A500-301	TLY561	A500-301	TLY561	A500-301	TLY562	A500-303	TLY562	A500-303	TLY563	A500-305
Pivot Pin	TLY564	A500-401	TLY564	A500-401	TLY564	A500-401	TLY565	A500-402	TLY565	A500-402	TLY566	A500-403
Eye Bracket	TLY558	A500-101	TLY558	A500-101	TLY558	A500-101	TLY559	A500-102	TLY559	A500-102	TLY560	A500-103

Note: All cylinders are basic no-mount, with standard rod diameter, standard threads, no cushions and no magnet.

## Non Repairable Round Line Pneumatic Cylinders

- Double acting pneumatic cylinders provide linear action to automate movement with compressed air
- Stainless steel barrel and piston rod for added corrosion resistance
- Good for pressures up to 250 PSI and temperatures between -10°F to 165°F
- Use with Numatics® 5/2 4-way spool valve for solenoid valve actuation
- Other sizes and single acting cylinders on request
- Offered in 3 convenient mounts

TLY396



numatics

### DOUBLE ACTING PNEUMATIC CYLINDERS 3/4"-2" BORE & 1 TO 6" STROKE

Bore"	Stroke"	Double Acting Pivot Mount			Double Acting Nose Mount			Double Acting Double End Mount		
		Model No.	Mfg. No.	Price/Each	Model No.	Mfg. No.	Price/Each	Model No.	Mfg. No.	Price/Each
3/4	1	TLY396	0750D02-01A	TLY390	0750D01-01A	TLY402	0750D04-01A			
3/4	2	TLY397	0750D02-02A	TLY391	0750D01-02A	TLY403	0750D04-02A			
3/4	3	TLY398	0750D02-03A	TLY392	0750D01-03A	TLY404	0750D04-03A			
3/4	4	TLY399	0750D02-04A	TLY393	0750D01-04A	TLY405	0750D04-04A			
3/4	5	TLY400	0750D02-05A	TLY394	0750D01-05A	TLY406	0750D04-05A			
3/4	6	TLY401	0750D02-06A	TLY395	0750D01-06A	TLY407	0750D04-06A			
1 1/16	1	TLY414	1062D02-01A	TLY408	1062D01-01A	TLY420	1062D04-01A			
1 1/16	2	TLY415	1062D02-02A	TLY409	1062D01-02A	TLY421	1062D04-02A			
1 1/16	3	TLY416	1062D02-03A	TLY410	1062D01-03A	TLY422	1062D04-03A			
1 1/16	4	TLY417	1062D02-04A	TLY411	1062D01-04A	TLY423	1062D04-04A			
1 1/16	5	TLY418	1062D02-05A	TLY412	1062D01-05A	TLY424	1062D04-05A			
1 1/16	6	TLY419	1062D02-06A	TLY413	1062D01-06A	TLY425	1062D04-06A			
1 1/4	1	TLY432	1250D02-01A	TLY426	1250D01-01A	TLY438	1250D04-01A			
1 1/4	2	TLY433	1250D02-02A	TLY427	1250D01-02A	TLY439	1250D04-02A			
1 1/4	3	TLY434	1250D02-03A	TLY428	1250D01-03A	TLY440	1250D04-03A			
1 1/4	4	TLY435	1250D02-04A	TLY429	1250D01-04A	TLY441	1250D04-04A			
1 1/4	5	TLY436	1250D02-05A	TLY430	1250D01-05A	TLY442	1250D04-05A			
1 1/4	6	TLY437	1250D02-06A	TLY431	1250D01-06A	TLY443	1250D04-06A			
1 1/2	1	TLY450	1500D02-01A	TLY444	1500D01-01A	TLY456	1500D04-01A			
1 1/2	2	TLY451	1500D02-02A	TLY445	1500D01-02A	TLY457	1500D04-02A			
1 1/2	3	TLY452	1500D02-03A	TLY446	1500D01-03A	TLY458	1500D04-03A			
1 1/2	4	TLY453	1500D02-04A	TLY447	1500D01-04A	TLY459	1500D04-04A			
1 1/2	5	TLY454	1500D02-05A	TLY448	1500D01-05A	TLY460	1500D04-05A			
1 1/2	6	TLY455	1500D02-06A	TLY449	1500D01-06A	TLY461	1500D04-06A			
2	1	TLY468	2000D02-01A	TLY462	2000D01-01A	-	-			
2	2	TLY469	2000D02-02A	TLY463	2000D01-02A	-	-			
2	3	TLY470	2000D02-03A	TLY464	2000D01-03A	-	-			
2	4	TLY471	2000D02-04A	TLY465	2000D01-04A	-	-			
2	5	TLY472	2000D02-05A	TLY466	2000D01-05A	-	-			
2	6	TLY473	2000D02-06A	TLY467	2000D01-06A	-	-			

Description	Model No.	Mfg. No.
3/4" Pivot Mount Bracket	TLY619	M029003
1 1/16" Pivot Mount Bracket	TLY619	M029003
1 1/4" Pivot Mount Bracket	TLY628	M229003
1 1/2" Pivot Mount Bracket	TLY620	M029004
2" Pivot Mount Bracket	TLY629	M229005
3/4" Rod Clevis	TLY624	M127003
1 1/16" Rod Clevis	TLY625	M127004
1 1/4" Rod Clevis	TLY626	M127005
1 1/2" Rod Clevis	TLY626	M127005
2" Rod Clevis	TLY627	M127006
3/4" Nose Mount Bracket	TLY621	M117005
1 1/16" Nose Mount Bracket	TLY621	M117005
1 1/4" Nose Mount Bracket	TLY622	M117007
1 1/2" Nose Mount Bracket	TLY622	M117007
2" Nose Mount Bracket	TLY623	M117009

Rod Diameters: 3/4" Bore = 0.250; 1 1/16" Bore = 0.313; 1 1/4" & 1 1/2" Bore = 0.438; 2" Bore = 0.625

Port Sizes: 3/4", 1 1/16", 1 1/4" & 1 1/2" Bore = 1/8" FNPT; 2" Bore = 1/4" FNPT