



## Wall Mounted Waste Receptacles

- Stainless steel construction is best suited for high traffic areas
- Waste receptacle is completely removable for convenient maintenance
- Comes with standard bag holder apparatus
- All stainless welded construction



Model No.	Mfg. No.	Capacity	Price /Each
JH005	326	11 US gal.	

## Grab Bars

- The Frost SP series stock grab bars are of an all steel construction
- The white powder coat finish make this a clean, attractive, cost effective product to specify for any installation
- Stamped flange is 12 gauge steel with a full 360 degree bead weld to the 18 gauge steel tubing
- Features concealed mounting detailing
- The Frost SP grab bar series comply with handicap codes requiring 1-1/4" bar diameter and wall clearance of 1-1/2"



Model No.	Mfg. No.	Length"	Price /Each
JG997	1001SP36	36	
JG998	1001SP42	42	

## Angled Frame Mirrors

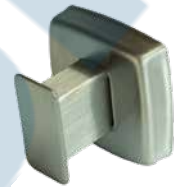
- The 941 stock series mirror is ideal for any location with its vandal resistant three way concealed fastener mounting
- Stainless steel frame provides rigid assembly
- Comes in bright annealed finish
- 4 mm glass with shock resistant primary back
- Full galvanized back panel



Model No.	Mfg. No.	Dimensions W" x H"	Price /Each
JG994	941-1830	18 x 30	
JG995	941-1836	18 x 36	
JG996	941-2436	24 x 36	

## Robe Hooks

- Concealed mounting
- Robe hook portion fabricated from 16 ga. ss type 304, no. 4 brushed finish
- Material: Stainless Steel



Model No.	Mfg. No.	No. of Hooks	Price /Each
JG999	11385	1	
JH001	11395	2	

## Clothing Hooks

- 11-gauge, type 304 stainless steel, satin finish
- 1 1/4" x 1 1/4" hook projects 1 1/8" from wall
- 2 1/4" high



Model No. NG457  
Price/Each \$



## Hook Strips

- Type 304-stainless steel, satin finish
- 1" wide, 6 1/2" high hooks project 2 1/4" from wall
- 4" high mounting strip and 1/4" return



Model No.	Hooks	Length"	Price /Each
NG458	3	24	

## Shelves

- For use in industrial plants, public washrooms, schools, and institutions
- Made of brushed finish stainless steel 22-gauge
- Welded to stainless steel wall plate
- Dimensions: 18" L x 5" D



Model No.	Description	Wt. lbs.	Price /Each
NC901	Heavy-Duty Shelf	3	

## Auto Faucet® Centre Sets with Thermostatic Valve

- Touch-free design allows for up to 70% in water savings
- Eliminates cross-contamination to help reduce the spread of germs
- Surround Sensor™ technology creates a 3" omni-directional sensing zone guaranteeing activation every time
- Patented "dry" cam-gear technology (solenoid valve free) ensures trouble-free operation to reduce maintenance
- Long battery life, 400 000 cycles or three years (4 "D" batteries included)
- Optional AC power adapter available
- Includes: Spout, valve control module, thermostatic mixing valve and hot/cold supply hoses



Model No.	Description	Price /Each
JC940	Milano	

## Auto Flush® Clamps

- Easy installation onto existing handle in minutes
- Prevents odors by ensuring that fixtures are flushed after every use
- Promotes good hygiene by eliminating potential points of cross-contamination
- No water shut-off is required
- Slides over existing flush handle
- Smart Object Infrared Technology manages flushing automation for world-class reliability
- Long battery life, 3+ years or up to 60 000 flushes
- Toilet and urinal models available
- Has courtesy flush button
- Adapter kit for popular models is sold separately



Model No. JC942  
Mfg. No. FG401805A  
Price/Each \$



## ADAPTERS

Model No.	Mfg. No.	Description	Price /Each
JC943	401973	Canadian Adapter Kit for Crane, Teck and Tempus Models	