



## Rubber Wheel Chocks

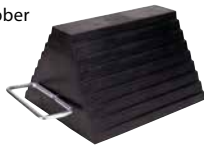
- Highly resistant to abrasion, impacts, corrosion, sun, salt, ozone and oil
- Steel ring on back
- 6 1/2" W x 7 1/2" H x 9 1/2" D
- Weight: 12.5 lbs.

Model No. KH032  
Price/Each \$



## Rubber Chocks

Fabricated of a resilient rubber compound, reinforced for maximum wearability and strength.



**Type A** - May be used with chains

**Type B** - Traditional eyebolt for sturdy chain connection

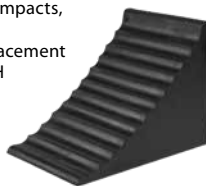


Model No.	Type	Approx. Size W" x L" x H"	Wt. lbs.	Price /Each
KH600	A	8 x 9 x 6	10	
KH601	B	8 x 9 x 6	10	

## Rubber Wheel Chocks

- Constructed of reinforced rubber
- Resists tearing, abrasions, impacts, corrosion, sun, salt, and oil
- Handle on back for easy placement
- 9 7/8" L x 7 1/8" W x 7 1/2" H
- Weight: 9.5 lbs.

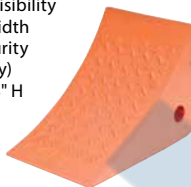
Model No. KH893  
Price/Each \$



## Urethane Wheel Chocks

- Safety orange for greater visibility
- Molded-in hole through width of chock for attaching security chain (chain sold separately)
- Overall size: 11" L x 8" W x 8" H

Model No. KH897  
Price/Each \$



### PREVENT ACCIDENTS!

Chocks are designed to provide maximum gripping power on practically any surface, wet or dry. They are resistant to sun, moisture, salt, oil and meet OSHA requirements



## Ice Chocks

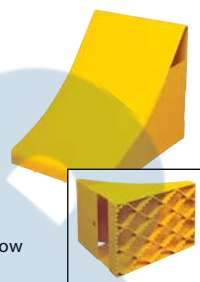
- Formed steel
- "Tooth" like bottom assures reliable grip
- Maximum holding power for snow and ice
- Overall dimensions: 10 1/2" L x 8" W x 9 1/4" H
- Powder-coated safety yellow finish for high visibility

Model No. KH964

Price/Each \$

## Laminated Rubber Chocks

- Designed to fit curvature of tire for a strong grip
- Extra heavy duty laminated rubber and steel construction for use with heavy utility trucks and equipment. Load capacity: Up to 40 000 lbs.



Model No.	Approx. Size W" x L" x H"	Wt. lbs.	Price /Each
KH603	8 x 8 x 8	14	

## Iron Wheel Chocks

Suited for your toughest jobs.

Colour:

- KH799 - Blue
- KH951 - Safety Yellow
- KH017 - Natural

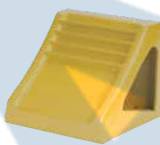
KH017



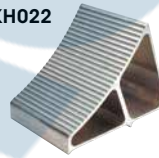
KH799



KH951



KH022



KH023



KH801



Model No.	Chock Material	Dimensions W" x L" x H"	Wt. lbs.	Price /Each
KH951	Ductile Iron	8 1/2 x 7 1/4 x 8 1/2	15	
KH799	Ductile Iron	8 x 12 x 9	19	
KH017	Ductile Iron	10 x 10 1/2 x 10 3/4	23	

## Aluminum Wheel Chocks

High in strength but lightweight. Resists the effects of oil, salt, corrosion and weather. Non-sparking.

Model No.	Dimensions W" x L" x H"	Wt. lbs.	Price /Each
KH023	7 x 6 x 6	4	
KH801	9 1/2 x 15 x 6 1/2	4	
KH022	7 x 11 1/2 x 8	6	

## Wheel Chock Accessories

### 18' SECURITY CHAIN W/HOOK

- Weight: 4 lbs.

Model No. KH027



### 10" X 14" CAUTION SIGNS

- Black letters on yellow field
- Weight: 6 oz.
- Vinyl

Model No. SAT137 English  
Model No. SEE554 French



SAT137



SEE554

### WHEEL CHOCK WALL BRACKETS

- Sturdy yellow metal construction
- Fits wheel chocks up to 10" wide
- Prevents loss of chock

Model No. KH963



Model No.	Description	Price /Each
KH027	18' Security Chain w/Hook	
SAT137	English Caution Sign	
SEE554	French Caution Sign	
KH963	Wheel Chock Wall Bracket	

## Rail Chocks

- These rugged steel rail chocks provide an effective means of blocking railcars for safe loading and unloading
- Steel points on chock heads bite into rail to prevent sliding. Standard finish in railroad maintenance yellow
- Integral 7 1/2" x 9 1/2" sign reads "chock"
- Single rail chock for stoppage in one direction; double rail chock for stoppage in both directions (with rubber strap and hooks for greater tension)
- Choice of exposed (above ground) or flush (level with ground) chocks



KH021



KH015

Model No.	Description	Wt. lbs.	Price /Each
<b>FOR EXPOSED RAIL</b>			
KH016	Single Chock	12	
KH021	Double Chock	16	
<b>FOR FLUSH RAIL</b>			
KH015	Single Chock	12	
KH020	Double Chock	16	